

Application Note

/// Grinding dried goji berries

PRODUCT

MultiDrive basic (0025002638)
 MI 400 grinding chamber (0025003965)
 BL 2000.1 cutting blade (0020023169)

INDUSTRY

Pharmaceutical, food

OVERVIEW

The requirement was to grind dried goji berries into fine powder with the condition that no additional mediums are to be added during the grinding process to prevent sample contamination.

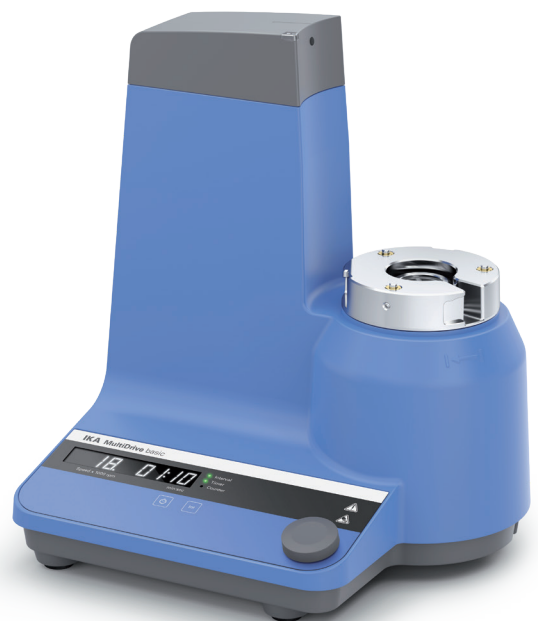
Goji berries are commonly used in traditional Chinese medicine (TCM) due to its medicinal properties. The raw berries are often converted into dried or powdered forms for consumption.



MI 400



BL 2000.1



MultiDrive basic

EXPERIMENTAL SETUP / SETTINGS

Grinder	MultiDrive basic
Grinding Chamber	MI 400
Cutting Blade	BL 2000.1
Grinding Time	3 minutes
Speed	20,000 rpm
Sample quantity	50 g



RESULT

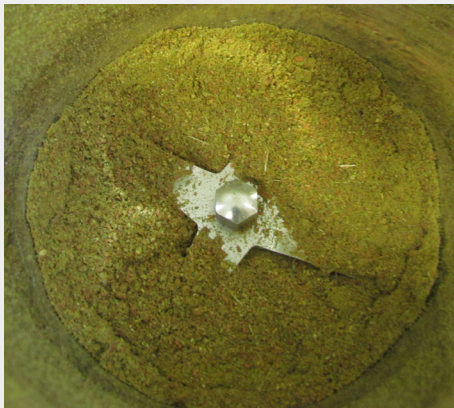
The Multidrive basic was successful in grinding the dried goji berries into an uniform fine particle size.



Pre-grinding



During grinding



Post-grinding



Final product

RECOMMENDATION

The BL 2000.1 cutting blade is recommended over the MI 400.2 cutting blade as this sample contains branches and leaves together with the dried goji berries.